

North West Cambridge: A new model of sustainability

A model for ambitious development, the University of Cambridge's multi-award-winning North West Cambridge is a lively new district providing 3,000 new homes, half classified as affordable, and 100,000sqm space for pioneering research.

It is the public realm that gives North West Cambridge a strong sense of place, integrating local rural characteristics such as hedgerows and heritage trees with a fine urban grain inspired by the historic core of Cambridge. LDA Design is working with site-wide contractor, Skanska, as the landscape architects on the design of Phase 1 Public Realm.

At the centre of this new neighbourhood is a school, community hub, sports centre and health complex, as well as a generous market square – a natural meeting point for the emerging community. The new Ridgeway encourages walking and cycling, and the 50ha of open, green landscape includes meadows, recreational parklands, and versatile playing fields. North West Cambridge is also the UK's most sustainable large-scale development, with energy-efficient homes and buildings. The country's largest rainwater recycling scheme utilises landscaped swales and feeds a beautiful lagoon. Woodland ridges serve as a buffer to the adjacent M11.



Client
Skanska

Location
Cambridgeshire

Partners
University of Cambridge

Services Used
Landscape Architecture

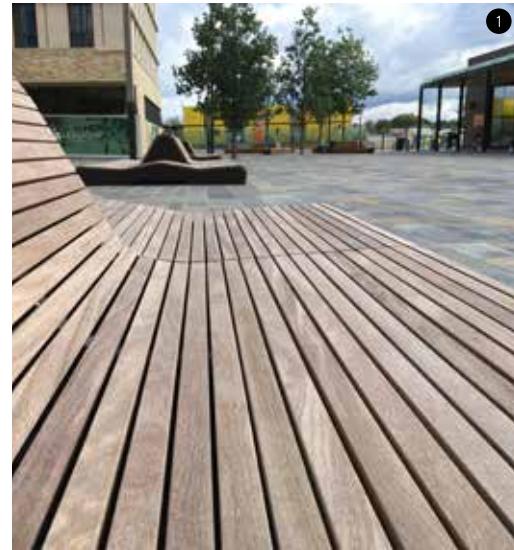
Area
150 ha

Schedule
2014 - 2018 (Phase 1)

¹ Market Square

² Hard and soft landscape to the Ridgeway

³ Lagoon and woodland ridges with art pavilion



- 1 Market Square timber furniture
- 2 Urban swales and bridges
- 3 Lagoon picnic area
- 4 Playground