

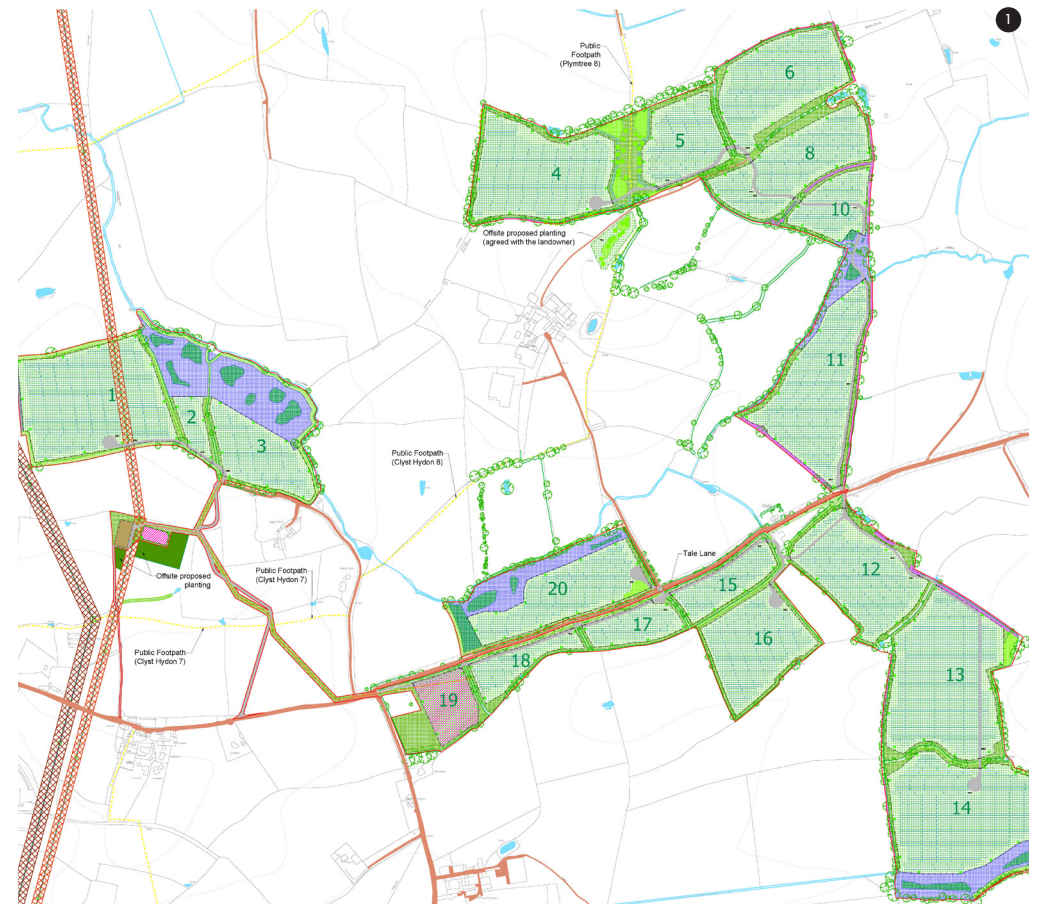
# Paytherden Solar Farm

## A step forward for renewables in the UK

When operational, the 49MW Paytherden Solar Farm, near the Devon village of Clyst Hydon, will be capable of powering close to 15,000 homes. It could prevent 21,000 tonnes of CO2 from entering the atmosphere every year. LDA Design put forward the successful planning application on behalf of Lightrock Power, providing planning co-ordination, design layout consultancy, LVIA, and a robust Landscape and Ecological Management Plan.

It is critical that renewable energy projects have wider environmental and community benefits. To this end, Lightrock has set up a unique partnership with the RSPB to enhance local wildlife. It is the only solar developer so far to have done so. As part of the development process, barn owls will be encouraged to nest on site; holts and habitat will be established for otters; the banks of the River Clyst will be improved for wildlife including water voles; and other existing ecological corridors for reptiles, amphibians and small mammals will be enhanced.

LDA put forward an extensive planting strategy for Paytherden comprising more than 600m of new hedgerows and in excess of three football pitches of woodland planting. This will result in significant biodiversity net gain across the 70.5-hectare site, as well as protecting the setting of key receptors including surrounding rural settlements, public rights of way and heritage assets. The planning team also worked with technical specialists to arrive at the most appropriate construction traffic routing to and within the site, and to devise a mitigation solution for annual surface water flooding events along the lane through the site.



**Client**  
Lightrock Power

**Location**  
Clyst Hydon, Devon

**Partners**  
BSG Ecology, Kernon Countryside Services, CampbellReith, PJA, AB Heritage, Aspect Tree Consultancy, Wardell Armstrong

**Services**  
Planning, Environmental Planning, LVIA

**Area**  
70.5ha

**Schedule**  
2020 - 2022

<sup>1</sup> Site Plan